

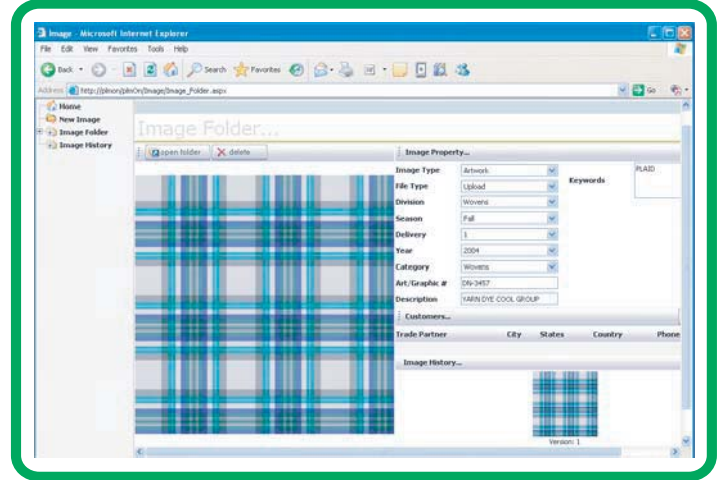


**Yunique Solutions**  
creating and developing unique solutions

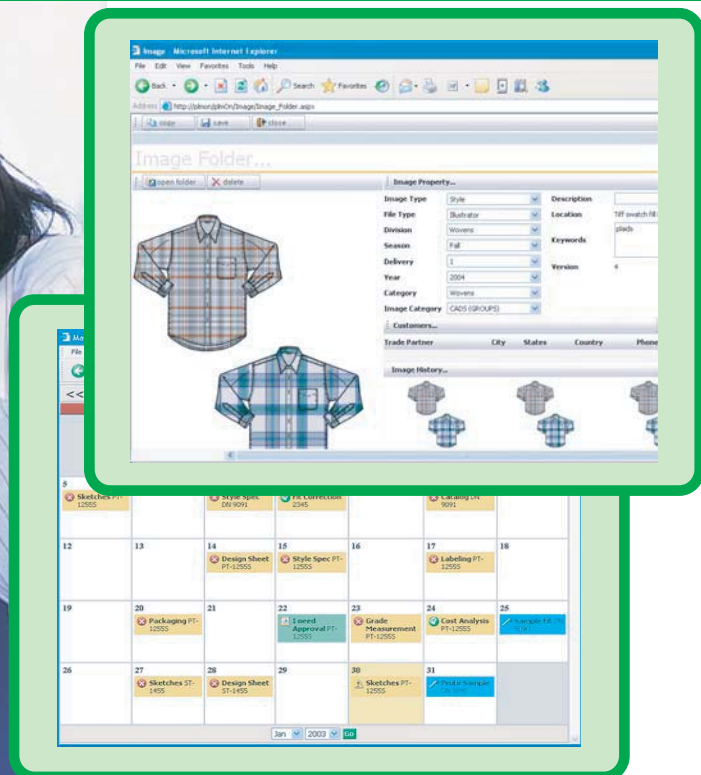
## A Glimpse of the Future

The technology you use today to communicate and manage your business will have more impact on your company's success and profit, than anything in the past.

Leading global apparel, home, and accessory, retailers and manufacturers alike, need more effective tools to stay ahead. Yunique Solutions offers plmOn which is becoming the benchmark in plm technology. It provides a comprehensive suite of product lifecycle management (plm) technology and services that help organizations execute, analyze, and optimize their business.



**plmOn** a 100% browser based - user friendly PLM solution.





## Digital Artwork Management

- Access unlimited digital media via browser, anywhere anytime.
- Easily find artwork, sketches, story-boards and digital photos.
- Launch Adobe Photoshop, Illustrator, and other CAD software, to quickly edit artwork and sketches directly on a MAC or PC.
- Maintains an actual image history with convenient roll-back.
- Print, email and or write image files for CD authoring.

## Tech-Pack Management

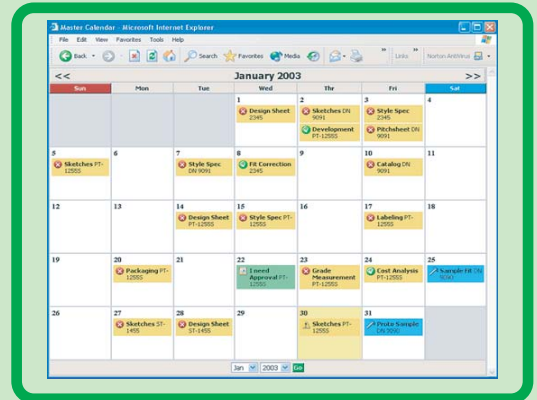
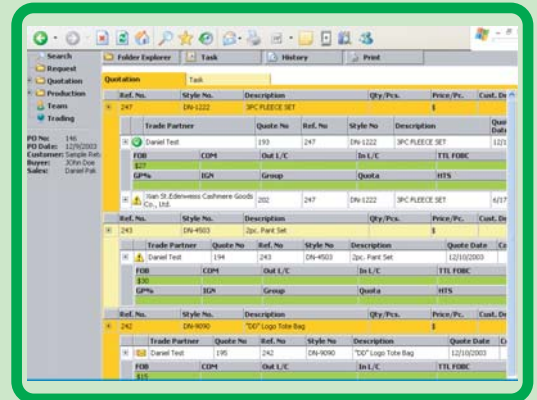
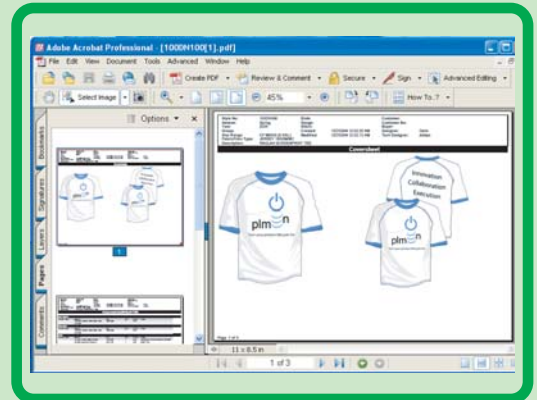
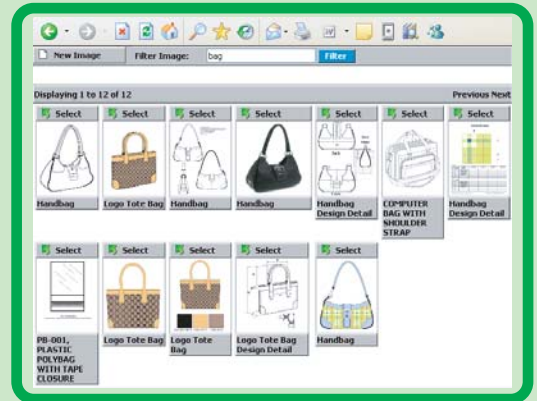
- Quickly create tech-packs with re-usable and editable sketches, artwork, colors, colorways, stitch detail, and target point-of-measures.
- In one step, distribute tech-packs to unlimited factories electronically.
- Track in real time, when factories download tech-packs.
- Updated or changed tech-pack automatically notifies teams via email.
- Track sample status and fit summary indicating multiple fit session results, and comments on one screen.

## Quotation Management

- View completed styles ready for quotation
- Send individual or group product tech-pack for vendor quotation.
- Compare and approve factory quotations and communications.

## Program Sample - Tracking

- Capture production WIP plan and track all approvals with drill down access to actual submit comments and details.
- Create different production scenarios based on country of origin.
- Associate responsibilities against submit approvals to specific team members' to-do-lists and calendars.
- System alerts vendors of submits planned due dates to stay on WIP timeline.





## Pre-Concept Line Management

- Merchants can request actual programs from the design group.
- Comments can be shared between team members, both remote as well as internal.
- Adopting concepts takes you straight to the tech-pack stage ready for details and technical specing.

## Material Management

- Create & re-use materials based on required information.
- Attach and send actual print, yarndye & packaging artwork with associated colors and fonts to vendors, electronically.
- In one step, update material corrections to all styles using that material.
- "Where Used" indicates which material is used on what product(s).
- Seasonal tracking and one to many lab-dip color approval.

## Features

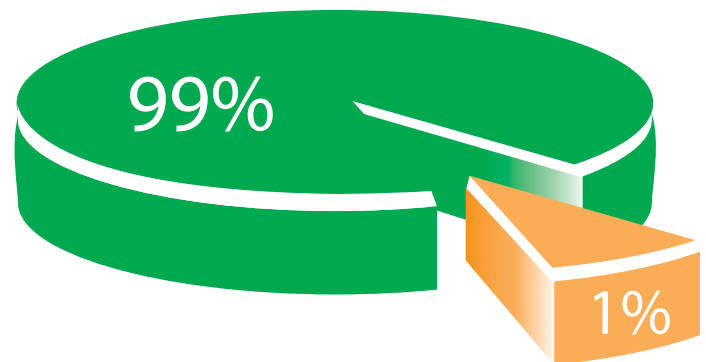
- 🔌 Developed in the United States.
- 🔌 100% Web-based server application.
- 🔌 Requires only a browser.
- 🔌 Built on Microsoft's .net framework.
- 🔌 Single point of data entry and maintenance.
- 🔌 Aligns critical business processes and system functionality.
- 🔌 Secure access to images and data anywhere, at anytime.
- 🔌 Runs on MAC & PC operating systems.
- 🔌 Works directly with Adobe Photoshop and Illustrator.
- 🔌 Electronically sends tech-packs to remote trading partners.
- 🔌 Group dashboard view of product information.
- 🔌 Change notification for dispersed team members via email.
- 🔌 Finger tip tracking of sample packages on-line.
- 🔌 Workflow based on style and group dashboard level.
- 🔌 Real-time work in progress and time in action tracking.
- 🔌 Interoperability with ERP, SCM, CRM business systems.
- 🔌 Sends and receives XML format, ODBC compliant.
- 🔌 Visual user friendly interface for faster adoption.
- 🔌 Works with any local language.



Companies without a true web based PLM solution



Companies with a web based PLM solution



## Benefits

- 🔌 Easy to use, easy to train.
- 🔌 Facilitates design and merchandising processes.
- 🔌 Reduce the design cycle and time to market.
- 🔌 Reduce development costs.
- 🔌 Increase market share through product innovation, quality and accuracy.
- 🔌 Eliminate versioning errors and delays.
- 🔌 Improve change management processes to adapt to market demands.
- 🔌 Better leverage design, technical and production knowledge.
- 🔌 Increase customer driven innovation.
- 🔌 Process-centric approach aligns business critical needs and technology.
- 🔌 Collaborate easily and securely with off-shore trading partners.
- 🔌 Establish accountability internally as well as with third party vendors.
- 🔌 Collaborate in real-time with third party vendors as well as internal staff
- 🔌 Increase profitability through on trend - on margin product.
- 🔌 Quickly create line sheets and look books.
- 🔌 Timely & efficient product tracking.
- 🔌 Leverage existing technologies.
- 🔌 Yearly upgrades to keep current with business and technology demands
- 🔌 **The bottom line ... increase top-line revenue.**



## Services

Yunique Solutions offers a broad range of professional and technical services, designed to enhance your use of our software. These programs are aimed at providing our customers and partners with assistance in installing, deploying, and developing tailored solutions, in order to gain maximum benefits from your collaboration environment.

## Consulting

Yunique Solutions has acquired a wealth of experience in helping customers create alignment between business needs and IT resources within the creative arena through to production. One of the biggest lessons we have learned is that collaboration programs can falter or fail without strategic direction, or the right resources. Yunique Solutions service helps customers define that strategic direction and provides the right resources to get the project done correctly.

## Training

Yunique Solutions offers a wide variety of training services starting from a one-day introductory course, to a full week intensive look at using and administering our solutions to fit your needs. Our modular approach to training means you can pick and choose the courses that meet your company's particular needs.

We strongly recommend training so that your organization saves time in administering and initializing our solutions. The faster you are up and running, the quicker you will see a return on investment. After all, time is money.

## Support

Yunique Solutions takes pride in its support contract. It provides a fast online response to your various support needs relating to the use of plmOn. Customers on support also have access to maintenance releases containing fixes and patches. More importantly, clients on support are offered access to other useful software modules created by our software engineers. It's a fast and economical way to meet your company's needs.

Keep in mind that with the support contract, you will be getting the latest requested functionality driven by the industry as well as our other clients. This way your solution will always stay current with the market demands.

The support agreement also entitles you to receive all \*new releases of the software. The agreement protects your investment by ensuring that you always have the latest version.

## About Yunique Solutions

Yunique Solutions provides high value solutions for organizations where performance, management, and process improvement, are strategic initiatives. The management of Yunique Solutions is fully committed and aware of the strategic role of PLM and the value it can bring to every organization. Our commitment is not only to increase research and development resources, but also to strengthen the professional services and support team, that are pivotal in providing solutions that support your business, while making PLM project decisions. Contact your Yunique Solutions representative for more information.

To request a meeting or for more information contact us at:  
Yunique Solutions Inc., 552 Seventh Ave, New York, NY 10018  
Tel. 212.672.0098  
website: <http://www.yunique.com>  
email: [info@yunique.com](mailto:info@yunique.com)

\* Windows®, .net and XP are registered trademarks of Microsoft Corporation. All other trademarks or registered trademarks are the property of their respective owners.

\* Customers on a valid Extended Support Agreement are entitled to free minor releases (i.e. v1.x, etc) and qualify for special pricing for major releases (v2.x,3.x,etc.).